



Quilt Labels and Small Lettering with Creative DRAWings®

Labels give quilts the perfect personalized finishing touch!

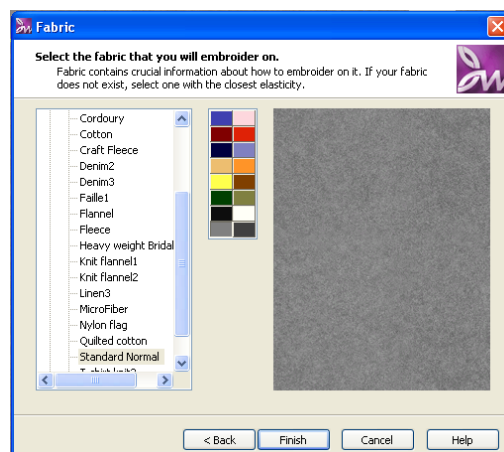
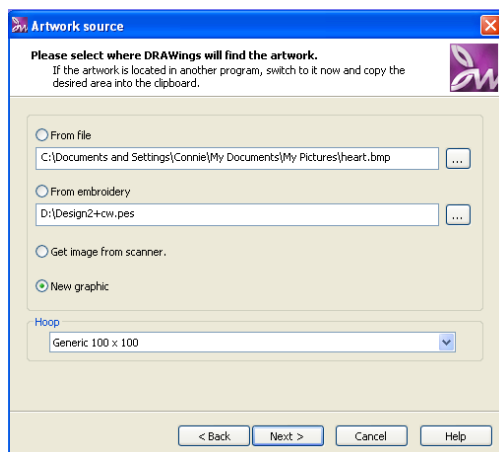
Small letters can be a challenge to embroider. In this lesson we will learn how to create a quick and easy label great for quilts or any crafty gift!



My fonts may differ from the ones installed on your computer. This is normal. Check out the June 2009 lesson to learn more about installing fonts and where to get free ones!

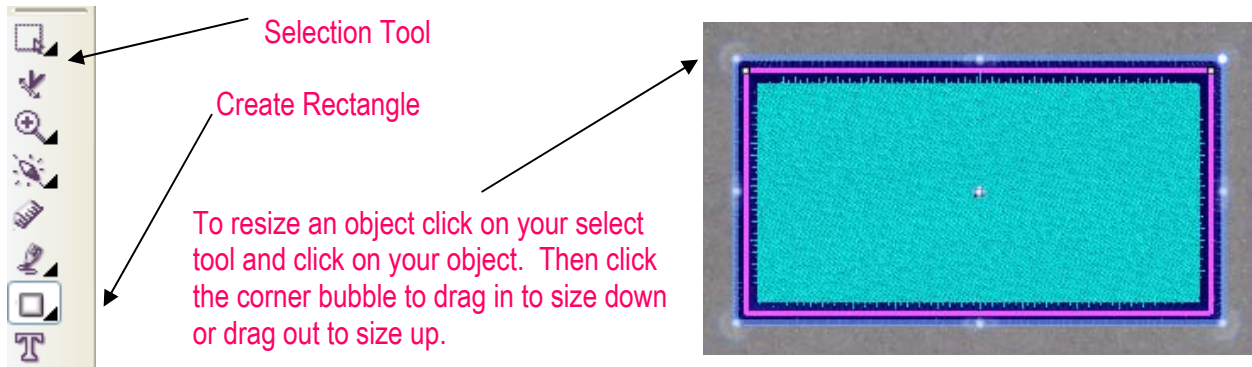
www.creative-drawings.com

1. Open Creative DRAWings®. The New Design window will open. Select **Create New**. Click **Next**.
2. In the Artwork Source Window choose **New Graphic**. *Selecting New Graphic will open a blank workspace for us to create our design.*
3. For Hoop select **Generic 100 x 100**. Click **Next**.
4. The fabric Window will appear. Choose the fabric you will be embroidering on and the color. I chose **Standard Normal & Grey**. Click **Finish**.

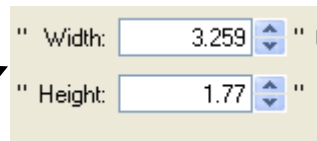


Creative DRAWings® will automatically adjust your underlay and density according to the fabric you select for embroidering. I love this feature! You can spend more time embroidering and less time with technical stuff.

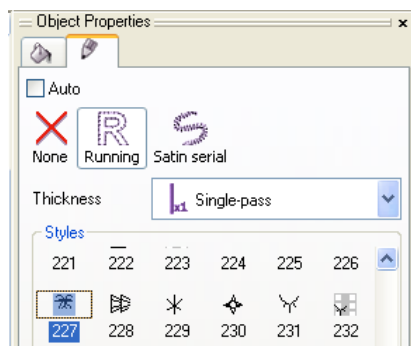
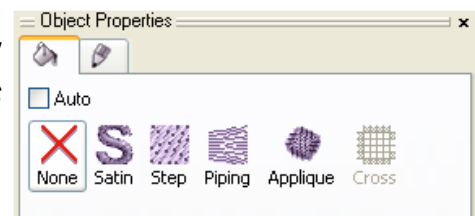
2. Using your **Create Rectangle Tool**, **Click and Drag** out a rectangle.



3. I made my rectangle **3.259** wide by **1.77** tall. You can also type in your desired size in the Height and Width boxes located at the top of your screen.



4. In the object properties box. **Change your fill to none.** Remember, the object properties will only show up if your design is selected.



5. We want to change our outline to a **Running Stitch**. You can see Creative DRAWings® gives us many different **Styles** to choose from.

I would like to create an open border to place my text in. I think it would be prettier than using a plain satin stitch. Choose whichever style you like, and make samples so you can see what all of the stitches look like.

5. I chose **#227** for my rectangle outline. I think this makes a nice border. I left my **Thickness** at **Single-pass** so it wouldn't be too thick for this style of stitch. I'm embroidering a pretty small design, and if it was too thick I could have an issue with my thread breaking. Too much thread in one spot = thread breakage or shredding.

Now our design should look something like this:

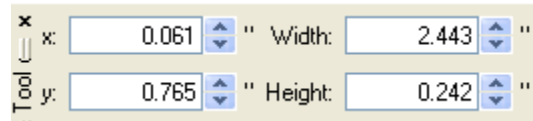
If you like, change the color of your border. To do this make sure your rectangle is selected and click on the color chip of your choice located at the bottom of the screen.



6. Now it is time to add some text to the center of our rectangle. Click on the **Text icon** located at the left hand side of your screen. Click inside the rectangle. At the top of the screen **choose a font**. I choose **Arial Rounded MT Bold**. Make sure to **click back inside your rectangle** before you start typing your text.



7. Type **Made With Love**. Change the size of the letters to 2.443 by .242 if you are using the same font.



Certain fonts work fine in a small size, others do not. It is always good to do a test sew out when creating a design before you put it on your project. The size of the needle and thread you are using can make a big difference on how your design looks and stitches out.



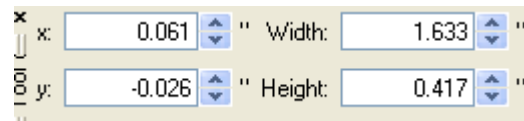
Tip Time!

For this design I used a SCHMETZ 75/11 needle. I also used Mega Sheen thread. If you are having trouble with thread breaking while you are embroidering small letters you can try using 60 weight heirloom sewing thread instead of embroidery thread. Most embroidery threads are 40 weight. By using a 60 weight instead (60wt is thinner), you will have crisper letters and less thread breakage. If this still doesn't help you, you may be using a font that is not suitable for a small size.

8. Using the same steps as in #6 create another line of text beneath the Made With Love. This time type the date your project was completed, I typed June 30, 2009 using the same font. I also kept the same height as the first line to make it uniform.

9. The last line of text is “for Elizabeth” or whomever you are giving the gift to. For this font I used French Script MT at 0.417 tall. Make sure that you select Satin for the type of stitch to be used.

When embroidering small lettering you can even set your machine to embroider at a lower speed to prevent thread from fraying.



10. The last step is to save your design. Simply go to **File, Save As**, Locate a place to save your design. Choose your machine format in the drop down menu and **Click Save**.

You can also save your design as a .draw file. If you would like to go back and work on your design you will need to load the .draw file. The .draw file holds special information that (the software) will need in order for you to be able and go back to make changes. Saving as a .draw file is a good idea.